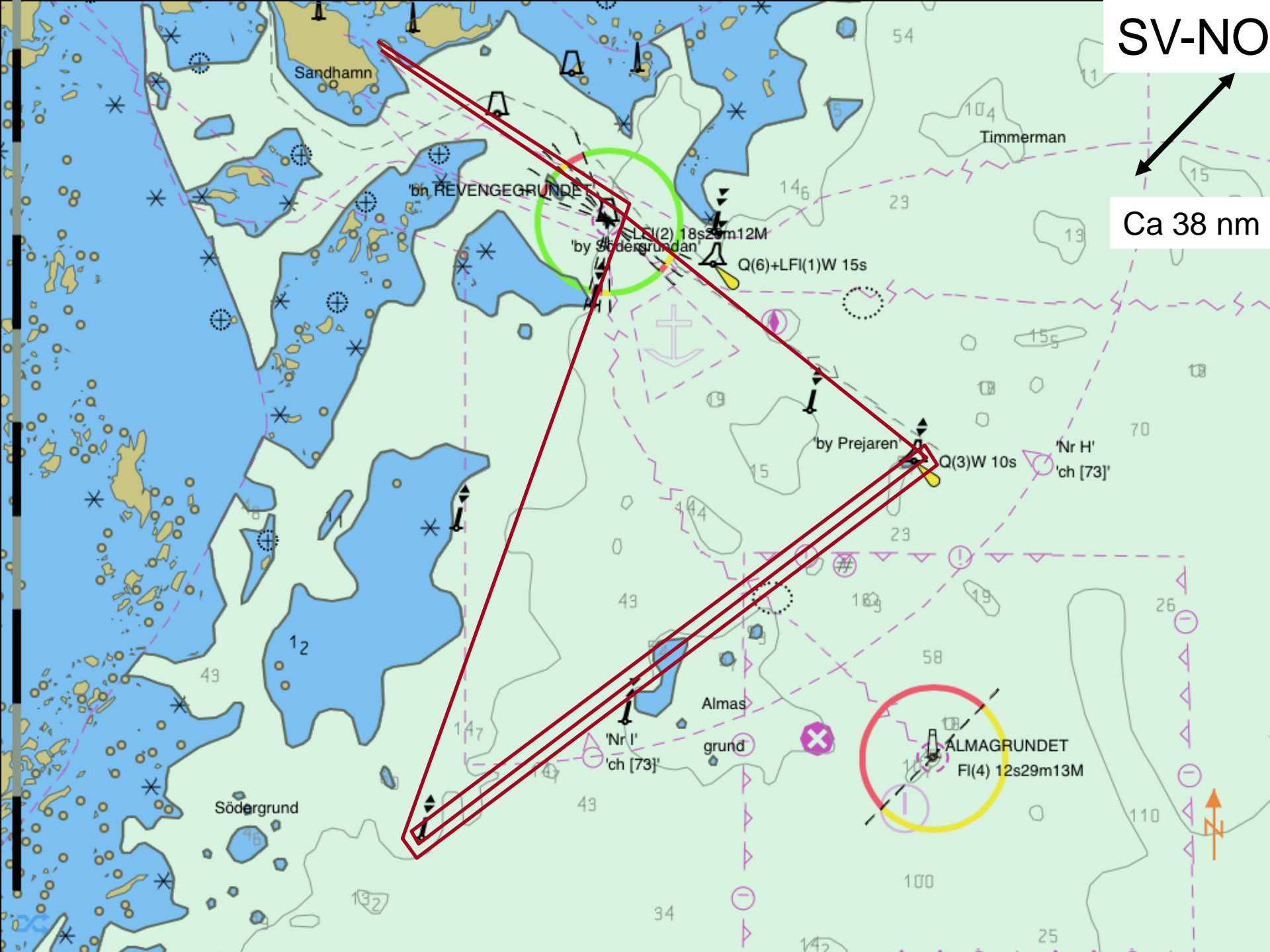
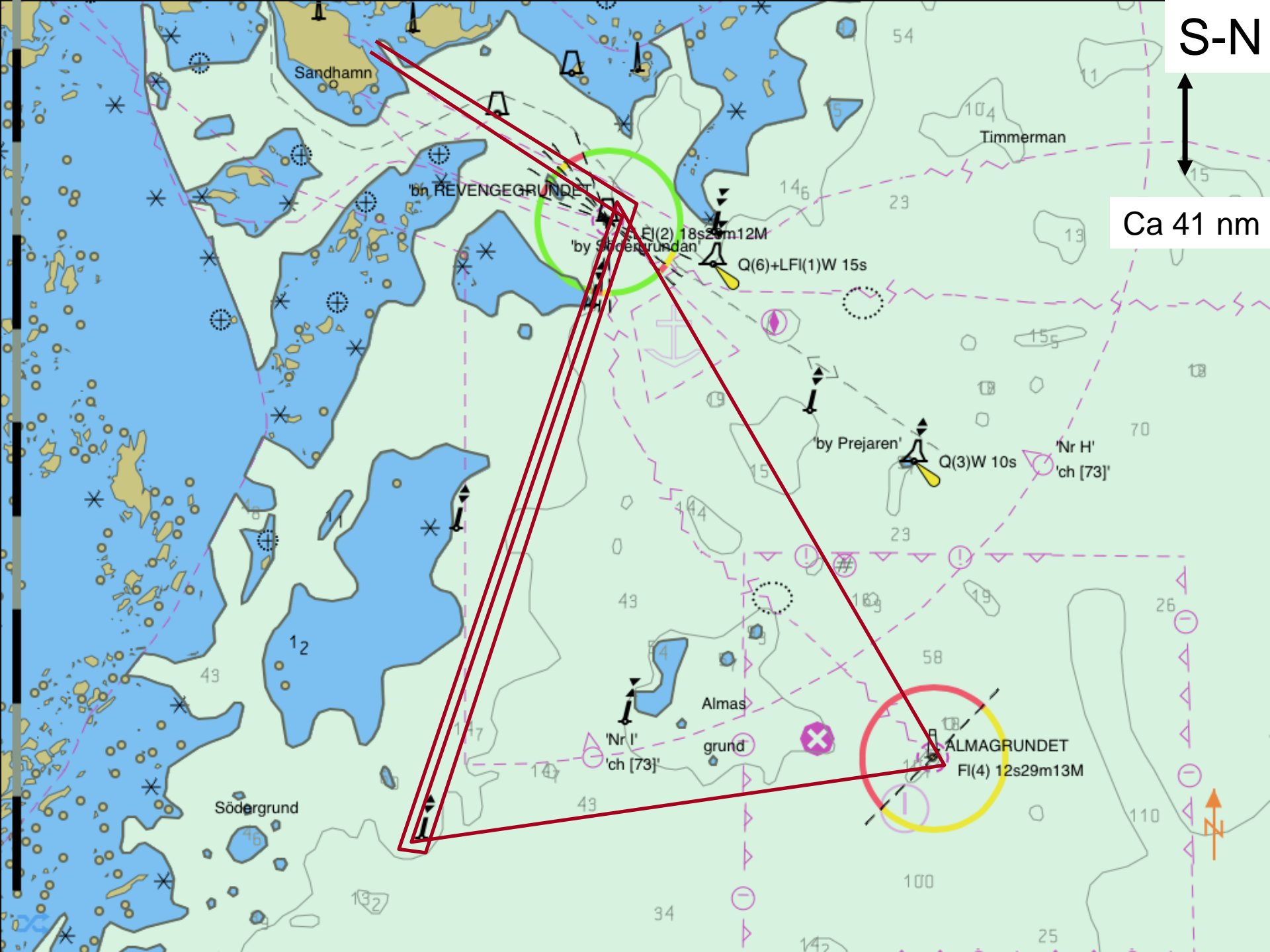


SV-NO

Ca 38 nm





S-N



Ca 41 nm

Sandhamn

Timmerman

'by Södergrundan'

FI(2) 18s29m12M

Q(6)+LFI(1)W 15s

'by Prejaren'

Q(3)W 10s

'Nr H' 'ch [73]'

12

Almasgrund

'Nr I' 'ch [73]'

ALMAGRUNDET

FI(4) 12s29m13M

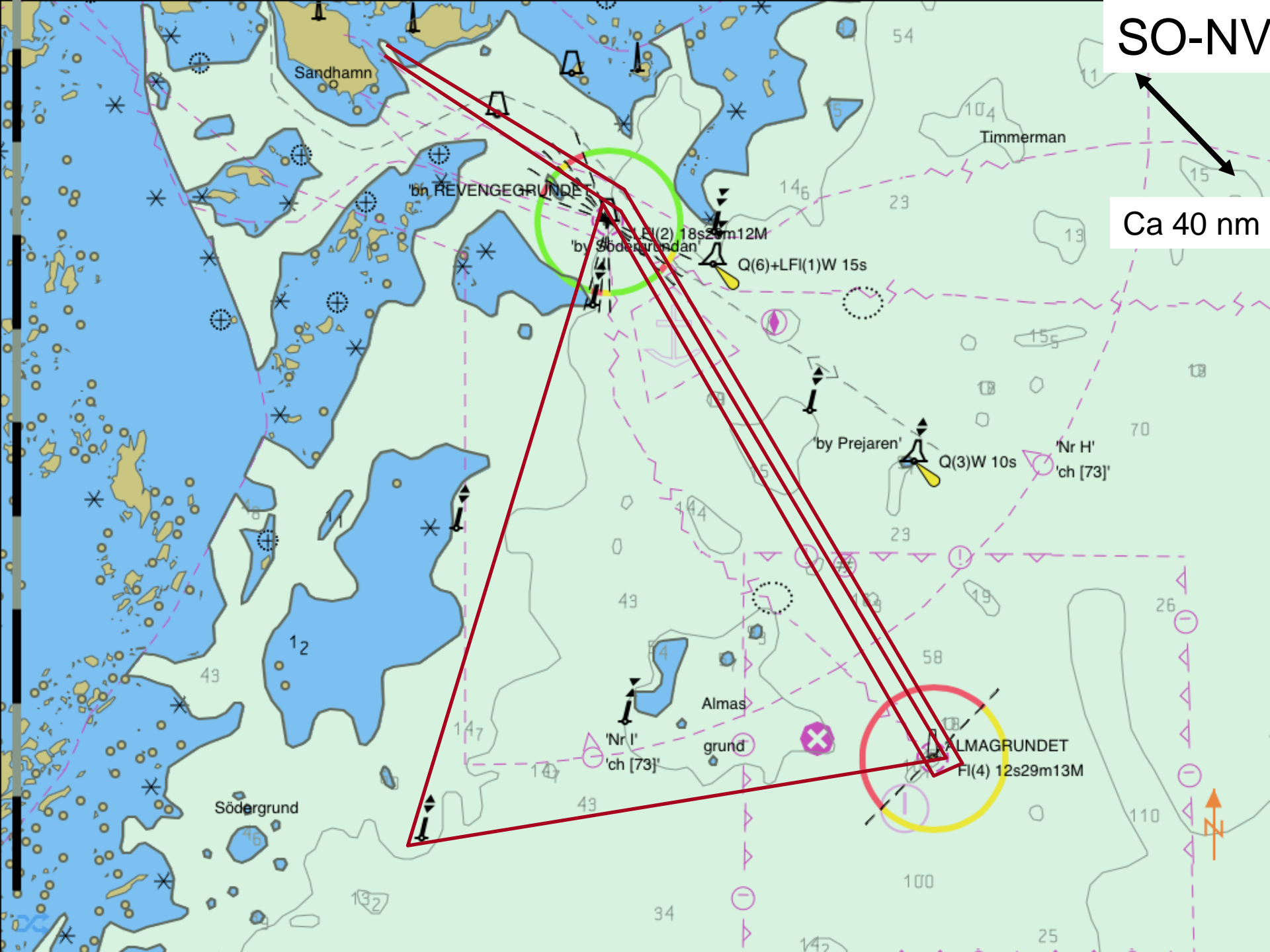
Södergrund

34

100

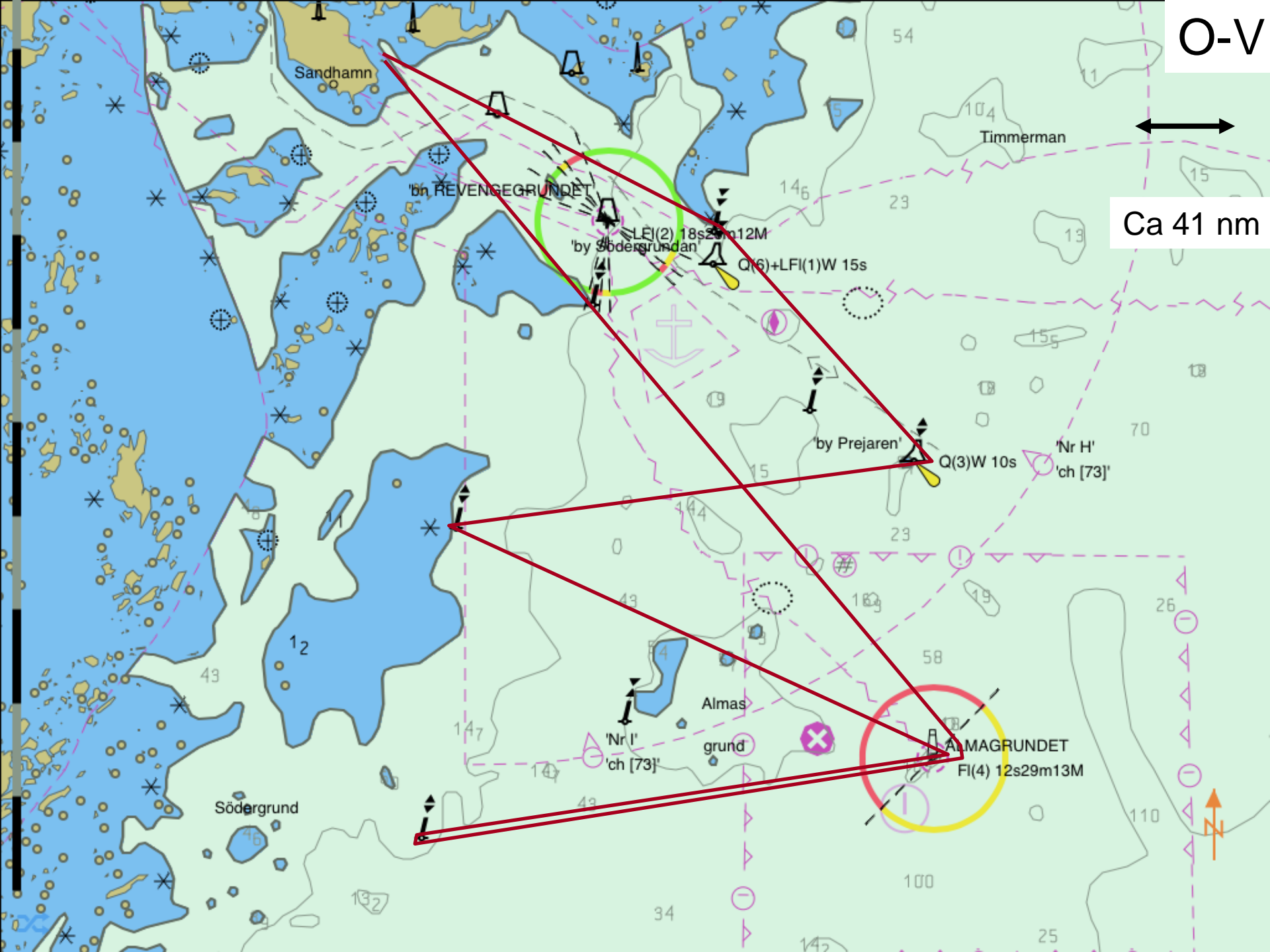
25





SO-NV

Ca 40 nm



O-V

Ca 41 nm