

SV-NO

Ca 38 nm

Sandhamn

Timmerman

'bn REVENGEGRUNDET

'by Södersundan
FI(2) 18s29m12M
Q(6)+LFI(1)W 15s

'by Prejaren

'Nr H'
'ch [73]'

12

Almas
grund

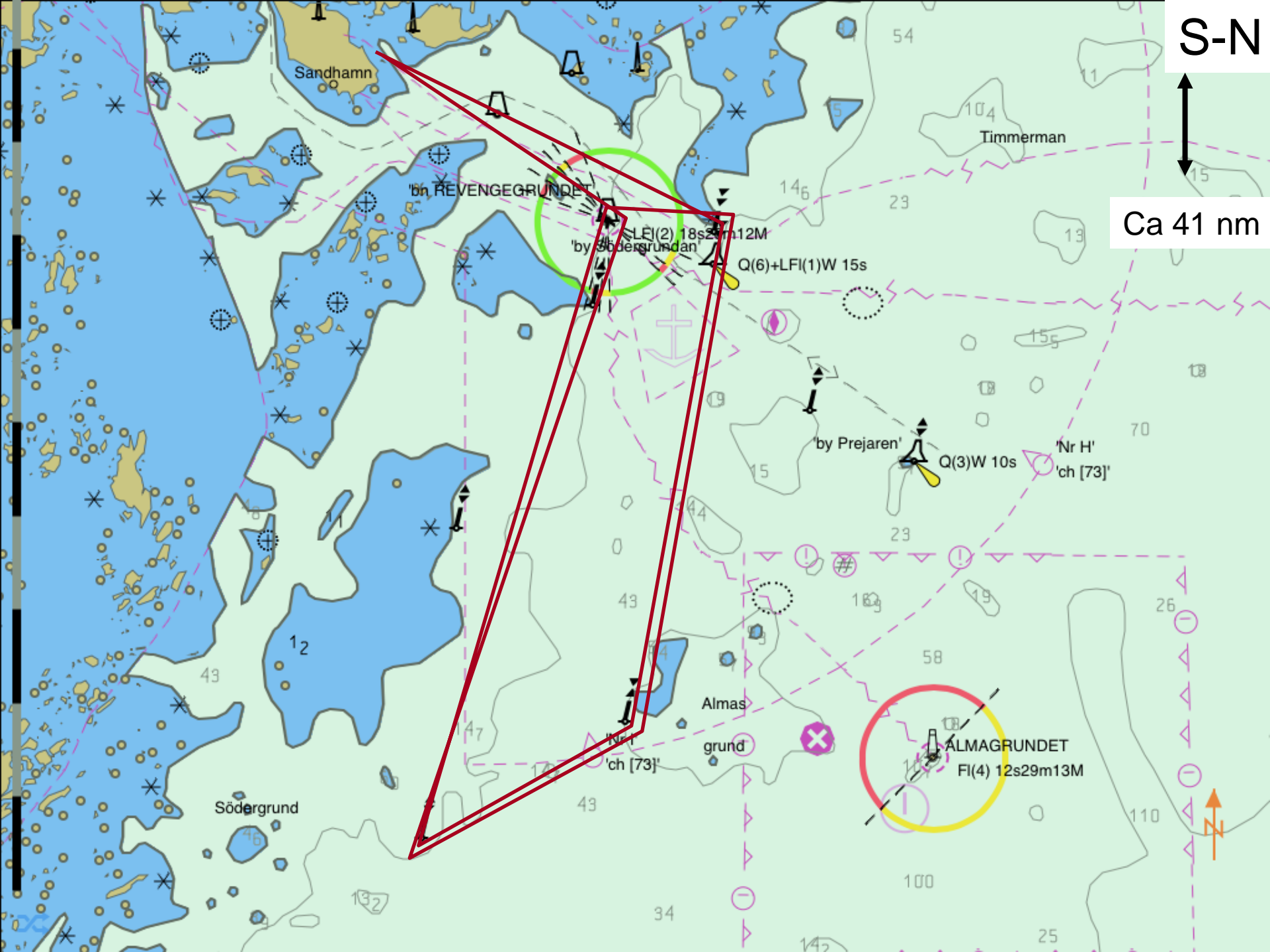
ALMAGRUNDET
FI(4) 12s29m13M

Södergrund

34

100

25



S-N



Ca 41 nm

Sandhamn

'bn REVENGEGRUNDET

'by Södergrundan

LEI(2) 18s29m12M

Q(6)+LFI(1)W 15s

'by Prejaren'

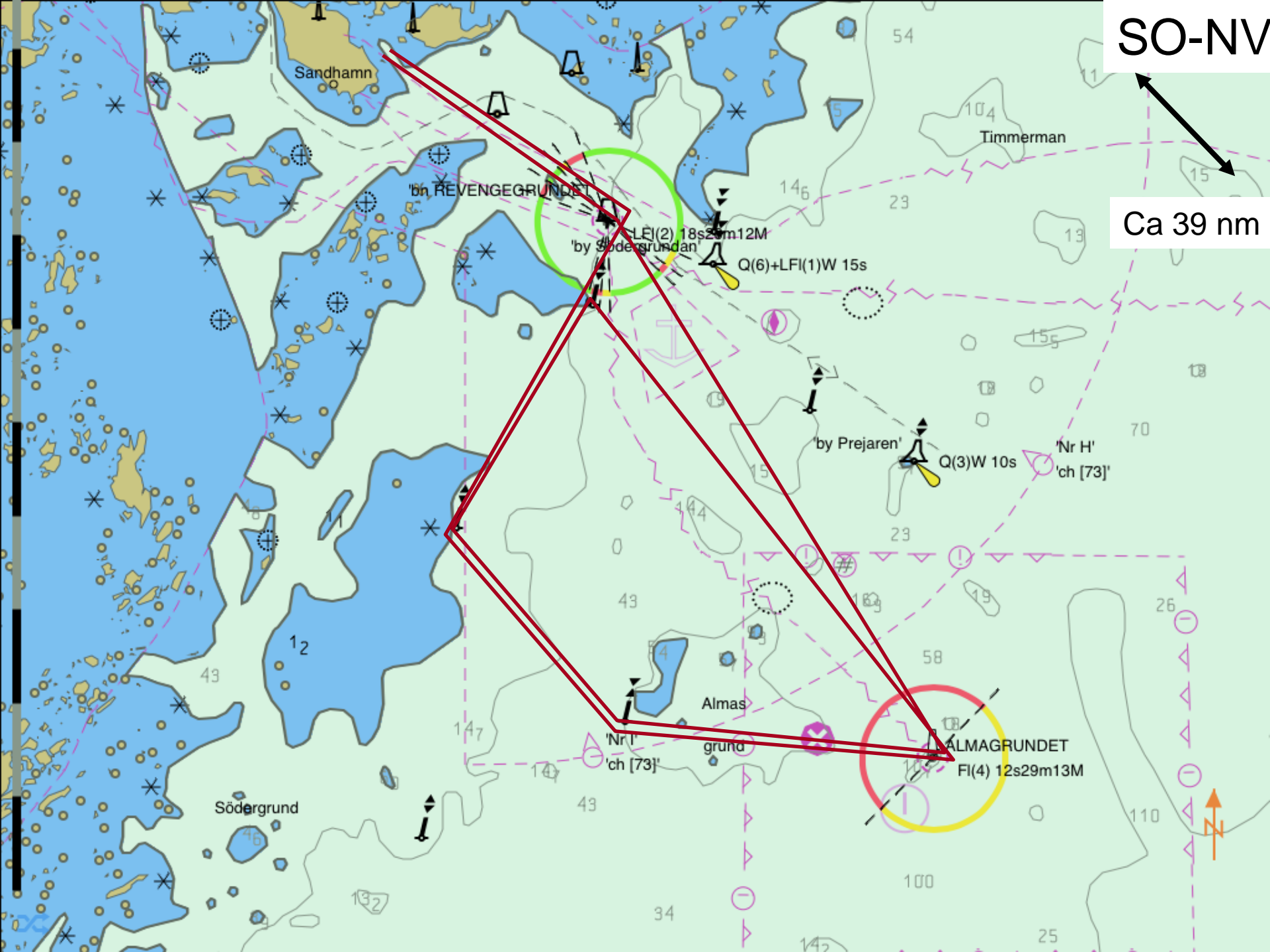
Q(3)W 10s

'Nr H' 'ch [73]'

Almas grund

ALMAGRUNDET
FI(4) 12s29m13M

Södergrund



SO-NV

Ca 39 nm

Sandhamn

Timmerman

'bn REVENGEGRUNDET

'by Södersgrundan

LFI(2) 18s29m12M

Q(6)+LFI(1)W 15s

'by Prejaren'

Q(3)W 10s

'Nr H' 'ch [73]'

12

Almas

grund

ALMAGRUNDET

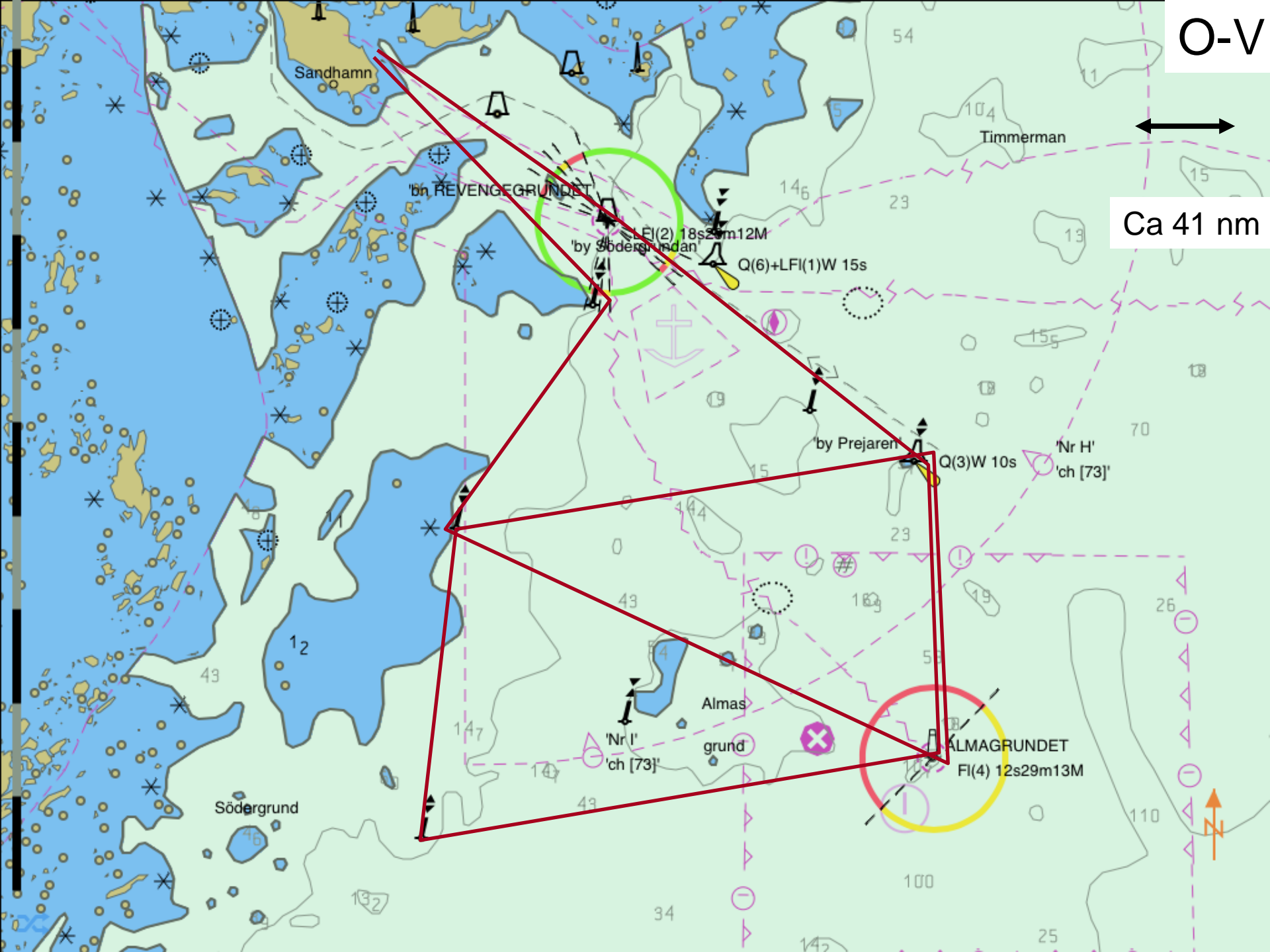
FI(4) 12s29m13M

Södergrund

43

100

25



O-V

Ca 41 nm

Sandhamn

Timmerman

'by REVENGEGRUNDET

'by Södergrundan

FI(2) 18s29m12M

Q(6)+LFI(1)W 15s

'by Prejaren

Q(3)W 10s

'Nr H' 'ch [73]'

Almas grund

'Nr I' 'ch [73]'

ALMAGRUNDET

FI(4) 12s29m13M

Södergrund

